



S SUITOUSHA
corporate profile

Your success is our business

S SUITOUSHA

<https://suitousha.co.jp>

2024.01.E



Road to 100th

Pursuing the mental and physical happiness of all employees and for their families.

Since the founding of SUITOU, we have seen growth as an opportunity since its establishment. We have built a solid relationship of trust with major manufacturers by consistently handling everything, from design to manufacturing and assembly of the hydraulic tubes and plant equipment. After China Factories, we have established a new production base in Philippines and expanding the business with major manufacturers around the world.

We also challenge new business such as road maintenance and aircraft leasing, and continue to develop as a strong corporation itself for a 100-year company. Our philosophy is "Pursuit of happiness to all employees and their families, both mentally and physically."

By establishing a system and environment in which each employee can take actions that are healthy, enjoyable, and without being ashamed, we are aiming to become an one and only corporation, and will make a further leap as a global company.



Suitou Group handles mass-produced products and custom-made products from top to bottom. **Suitousha Co., Ltd. / SEC Co., Ltd.**

Suitou Group has business with major construction machinery manufacturers and heavy industry manufacturers. Suitousha designs, manufactures and assembles the mass-production parts such as tube assembly for construction machinery. SEC designs, manufactures and assembles the plant tube line for heavy industry manufacturers with special care in every single item. In addition, SEC is involved in mass-production products handled by SUITOUSHA, and the relationship between two companies has become stronger and the range of products that can be ordered is expanding. And further, China and Philippines factory have same production system as SUITOU Japan, and possible to respond flexibly to adapt of world economy changing such as exchange rate fluctuations and trade friction. Going forward, we are working on to make a system for accepting orders for a variety of mass-produced products and custom-made products. We aim to become a corporation that can be reassured that all can be entrusted to the Suitou Group.



We will protect the region's safety and security by enhance the facilities and qualified personnel. **NEO DAISEI Co., Ltd.**

We are developing various businesses such as equipment management and traffic management, mainly on road maintenance of highways, motorways and general roads in Hyogo Prefecture. Also We are expanding of special vehicles such as tunnel sweepers, road sweepers, sprinklers, vacuum trucks. We are focus on training employees with a wide range of skills and making efforts to ensure for emergency respond. Based on the trust we have cultivated so far, we will expand our business scope and strive to further as a company that can provide high-quality operations with safe and secure.



Entered the aircraft leasing business as PIPE Role in global business.

Since the company is expanding globally, we provide our tube assembly products around the world. Based on the trust we have built, we have been working on aircraft leasing since 2015 to become a "PIPE" of the world. Not only to expand our business, we will continue to capture the market demands quickly in a wide range of fields and propose accurate business models.





Provide the One stop service, an unique ability of SUI TOUSHA as Total Supporting service.

DESIGN

By in cooperated with SEC of the SUI TOU GROUP, SUI TOUSHA design the system flow for modularization of tubes assembly with professional experience.

MANUFACTURE

Expand the production bases around the world, in order to adapt the international economic changes. Multiple production bases were established not only in Japan but also overseas, so that can respond flexibly.

ASSEMBLY and DELIVERY

"Just what is needed, Only when needed, Only in the quantity needed" We can provide new value to business partners.

Suitousha has an environment that employees having a sense of achievement and having a satisfaction.

The company has a history of over 80 years since its establishment, and Our company culture is pursuit of happiness for employees and We are operating based on globally and foreign languages friendly that leads

has continuing stable business with major global companies. their families and everyone can participate it. our employees to takes part in it to reach the goal internationally.

Our Strength

Our Customer are major global companies

Most of the business partners of Suitousha are representatives of Japan which includes Caterpillar Japan, Mitsubishi Heavy Industries, and Komatsu. With one-stop support from design to assembly and installation, we have achieved the trust from our business partners.

A rewarding work place

Our management philosophy is "Pursuing the mental and physical happiness of all employees and for their families." We will continue to grow as a company that contributes to business partners and communities by creating an environment where all employees can work with their reward to get credit by diverse personalities and values.

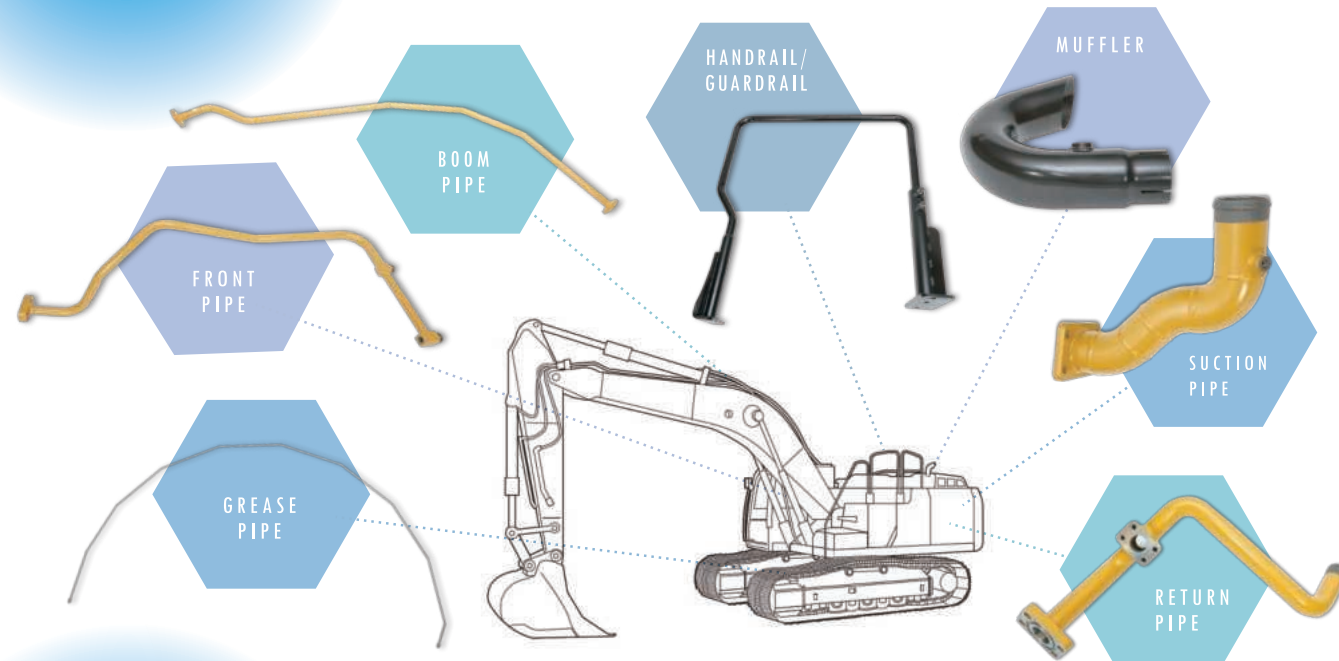
A Work place that can be achieved the GOAL on Globally

With production bases in China and Philippines, Business with major global companies around the world will further expand, and it already expanded from ASIA to EUROPE and the United States. SUI TOUSHA created the environment that employees can fully work to use of foreign languages.



Product introduction products

Manufacturing tube assembly that can be attached to construction machinery, from small-volume to mass-production. We can meet a wide range of customer needs of tube processing from Φ 6.25 mm to Φ 114.3 mm. Suitousha provides "confidence and pride" with "quality and safety" of tube assembly products with important purpose, which can be called blood vessels.



We have established a system for integrated production of tube processing for construction machinery products. Suitousha's strength is that it has a series of functions of prototyping, test & evaluation and production, and these are integrated. A factory in Japan has established itself as a mother factory, and sharing its technology and skills with overseas factories.



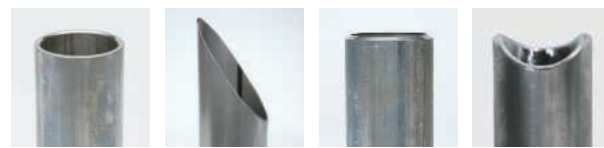
Technology introduction engineering

CUTTING

Tube production begins with the cutting process. After cut the tube, there are various methods to connect the tube. We do carefully finishing of the shape that can meets the specifications.



▲ Automatic circular saw cutting machine ▲ Carbide circular saw cutting machine ▲ Pipe coaster



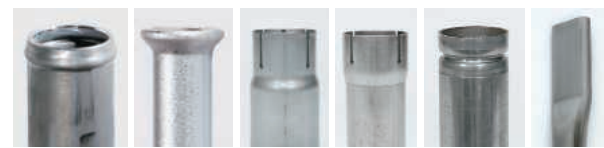
▲ Straight cutting ▲ Diagonal cutting ▲ Bevel cutting ▲ Saddle cutting

PIPE TERMINAL PROCESSING

When installing the tubes assembly into the machine, use custom equipment's and molds to meet Customers' specific requirement.



▲ Press machine ▲ Pipe Terminal processing machine ▲ Spinning machine



▲ Beading ▲ W flare ▲ Tube reduction ▲ Tube expansion ▲ Spinning ▲ Crush

BENDING

We have a various CNC Benders and can perform bending work for wide range of tubes. Bending accuracy is guaranteed by specialized 3D measuring device.



▲ CNC Bender ▲ Coordinated Measuring device (Non Contacting Type)

WELDING

The main welding methods are TIG welding and MAG welding. We offer a wide range of welding for various shapes and small diameter tubes up to large diameter tubes, including manual welding by skilled workers, as well as automatic welding equipment and robot welding equipment. After welding, Quality control does inspection of the welded tubes, by through visual inspection of the exterior, internal welding inspection using an endoscope, and a hydrogen leak inspection and above all, these are to increase the quality control of the products.



▲ TIG Welding ▲ MAG Welding ▲ Pulse TIG Welding ▲ High frequency Brazing ▲ Projection Welding ▲ Endoscope Inspection ▲ Hydrogen Leak Inspection

PICKLING & PAINTING

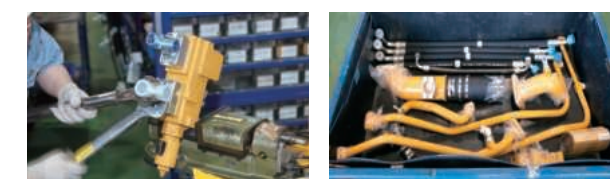
There are various chemical process, such as tube surface cleaning and rust removal and anti-rust coating. The anti-rust coating can be processed in two types, zinc phosphate coating and zirconium coating. There are two types of automatic painting equipment that can consistently perform for primary and finish painting, including a liquid painting line and a powder painting line. In addition, a manual painting booth is also available, enabling for single-item. In order to meet the increasing requirements for painting quality in recent years, we have developed visual inspection, film thickness measuring inspection, contamination inspections. The principal of painting is "The clean environment can produce clean product."



▲ Anti-rust coating ▲ Powder painting ▲ Liquid painting ▲ Drying furnace ▲ Visual inspection ▲ Cleanliness inspection

SUB ASSEMBLING / KIT / JIT

We delivers the goods per customer's request. In construction machinery, it will deliver as sub-assembled are Kitting and Just in time (JIT) delivery.



▲ SUB Assembling ▲ KIT Delivery

ASSEMBLING

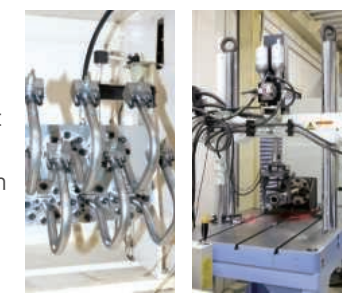
Assemble the tubes, according to the customer's required specifications. At the beginning stage, a skilled worker manually manufactures it and then use Jig for mass production, thus suppressing variations in quality. In addition, after tube assembly are measured with a specialized coordinate measuring machine to ensure dimensional accuracy.



▲ Assembling ▲ JIG Assembling ▲ Coordinated Measuring Machine (Contacting Type)

DURABILITY TEST

Suitousha has been cleared strict testing to ensure the quality. We deliver products that meet our customer's quality requirements with confidence and pride.



▲ Impulse Testing Machine ▲ Vibration test

**Provide the One stop service,
From design to production and installation.**

SEC Co., LTD. which was independently established by the Engineering Department from SUITOUSHA, is a total engineering company that can consistently handle everything from design, production, local installation, after-sales and maintenance. In recent years, we have designed and manufactured various tubes assembly products such as cooling water tubes for thermal power plants, compressor units, and power generation turbine peripheral units to equipment development products such as rocket launch pad.

< SEC's strength >

- All processes from top to bottom can be undertaken consistently.
- As it has strengths in designing and has a large assembly factory, we can provide and support from development.
- Equipment development products can be used for a wide range of applications, from mechanical design to electrical control design.

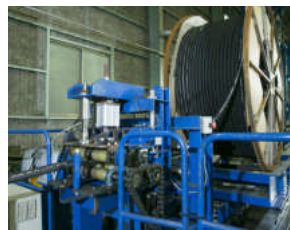
Product range handled by SEC

● Equipment development

Design, manufacturing and installation of equipment development such as tunnel boring machine, rocket launch pads, factory equipment.



▲ Tunnel Boring Machine



▲ Factory equipment

● Large diameter tubes

Design, production, and delivery for large diameter of cooling tube "circulation water tube" which used in thermal power plants.



▲ Coolant tubes for thermal power plants



● System unit - consisting of small diameter tubes assembly

Design and manufacturing of compressor units, lubricating oil units used in petrochemical plants.



▲ Compressor unit



Design of tubes assembly systems for turbines used in thermal, hydro and nuclear power plants, manufacture of tubes assembly, units assembling.



▲ Fuel gas flow control unit



▲ Manifold (fuel distribution tubes)

**From maintenance to traffic management,
Our goal is make a comfort and safety on the ROAD.**

Even if it called a maintenance service, the content of maintenance has many. We carry our various incidental tasks such as road inspections, emergency incident handling, structural emergency inspection, road surface repairs, and secure the safety on disaster & emergency, snow and ice respond to weather changes, traffic regulation work, traffic accident recovery, tunnel inspection and repair work, etc. We do provide the service to make a safe and secure the road environment for everyone who uses the road.

< NEO DAISEI's Strength >

- We respond promptly to emergency plans by making full use of a variety of vehicles such as tunnel sweepers, road sweepers, and signage vehicles.
- We are covering also equipment management and traffic management, not only road maintenance business.
- We support a wide range of operations with sufficient qualified personnel, including first-class civil engineers.

Business range of NEO DAISEI

● Road maintenance

Road repair, pavement, cleaning, construction of traffic safety facilities.



● Traffic Management

Managing the traffic by inspection and monitoring.



● Traffic Regulation

Sufficient qualified engineers for traffic guidance & security operation that possible to respond large scale construction as one of the largest in the prefecture.



● Electric equipment management

Provide the regular inspection and maintenance, so that electricity can be supplied stably even in the event of an accident or disaster.



● Maintenance of Rainwater pipes, sewage facilities

Inspection and repair of internal tubes, mainly for rainwater pipes and sewer.



● Disaster recovery plan

In response to the occurrence of a disaster, we can respond promptly to prevent or reduce the spread of damage.



Suitou Group SUITOU GROUP

To make a whole business can be well balanced.

The Suitou Group is a leading company with roles shared by Suitousha, which design, manufactures and assembles mass production parts for construction machinery. And SEC is shared its roles in the production of mass-production products handled by Suitou. And further with NEO DAISEI which conducts road maintenance was added to the group. In addition, also entered the aircraft leasing business. Our aim to become a strong corporation that can be well balanced in revenue.



Suitou Hydraulic Tube (Changzhou) Co., Ltd.



Wuxi Suitou Hydraulic Research & Design Co., Ltd.



Kobe Factory



Kobe 2nd Factory



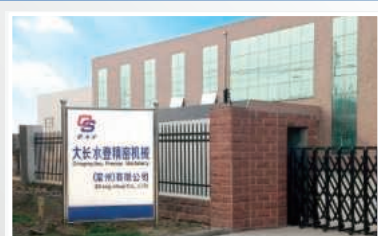
Futami Factory



Akashi Factory



Akashi Logistics Center



Onaga Suitou Precise Machinery (Changzhou) Co., Ltd.



WUXI SUITOU MACHINERY CO., LTD.



Suitou Philippines, Inc.



NEO DAISEI Co., Ltd.



SEC Co., Ltd.



SEC Inami Factory

● SUITOUSHA JAPAN

● SUITOUSHA CHINA

● SUITOUSHA PHILIPPINES

Suitousha Co., Ltd. 

Location	Headquarters (Kobe Factory) 2-1-2 Murotani Nishi-ku, Kobe-shi, Hyogo-ken 651-2241 TEL: 078-996-9300 FAX: 078-996-9307 Land: 5,000 m ² Floor: 2,539 m ²
	Kobe 2nd Factory 1-5-2 Murotani Nishi-ku, Kobe-shi, Hyogo-ken 651-2241 TEL: 078-990-5601 FAX: 078-990-5603 Land: 6,284 m ² Floor: 2,405 m ²
	Futami Factory 14 Higashinijima Harima-cho, Kako-gun, Hyogo-ken 675-0164 TEL: 078-941-3500 FAX: 078-941-3505 Land: 10,826 m ² Floor: 5,501 m ²
	Akashi Factory 1635 Okubocho Eigashima, Akashi-shi, Hyogo-ken 674-0064 TEL: 078-938-1120 FAX: 078-938-1121 Land: 2,576 m ² Floor: 1,318 m ²
	Akashi Logistics Center 1035-1 Uozumicho Shimizu, Akashi-shi, Hyogo-ken 674-0074 TEL: 078-941-8400 FAX: 078-941-8401 Land: 2,414 m ² Floor: 1,138 m ²
Founding	Jan 1938
Establishment	Apr 1951
Representative	HIRAI Daisuke
Capital	99,500,000 yen
Product	Hydraulic tubes assembly for construction machinery & Assembly of various construction machinery parts
Major customer	Caterpillar Japan Ltd. Caterpillar Inc. Caterpillar Brasil Ltda. Komatsu Ltd. KOBELCO Construction Machinery Co., Ltd. KUBOTA Corporation TAKEUCHI Mfg. Co., Ltd. MORITA CORPORATION Mitsubishi Heavy Industries Engine & Turbocharger, Ltd. GIKEN Ltd.

NEO DAISEI Co., Ltd. 

Location	Headquarters Nichiei Building 4F, 2-4-14 Sakaemachidori Chuo-ku, Kobe-shi, Hyogo-ken 650-0023 TEL: 078-331-1955 FAX: 078-331-4500
	Western Branch 127-1 Shigocho Hongo Kamishiro, Himeji-shi, Hyogo-ken 671-0243 TEL: 079-252-6338 FAX: 078-252-0137
	Kobe Branch 1-5-2 Murotani Nishi-ku, Kobe-shi, Hyogo-ken 651-2241 TEL: 078-990-4011 FAX: 078-990-4013
Establishment	Feb 2012
Representative	HIRAI Yoshiharu
Capital	50,000,000 yen
Product	Highway & automobile and Road traffic management Toll collection service Road maintenance for highways, toll roads, general national roads, etc. (Restoration work, Road cleaning, Pavement repair, Countermeasure of snow and ice, Various minor repairs, SA management, etc.) Cleaning of road machines & Sewer machines Tubes inspection TV camera Security Large-scale traffic regulation Architectural design / Civil engineering / Landscaping Traffic safety facilities (Design, Construction, Sales) Building maintenance
Major Customer	MLIT (Ministry of Land, Infrastructure, Transport and Tourism) West Nippon Expressway Company Limited Honshu-Shikoku Bridge Expressway Company Limited Hyogo Prefecture Kobe City Other municipalities Major construction contractors

SEC Co., Ltd. 

Location	Headquarters 1635 Okubocho Eigashima Kaniike, Akashi-shi, Hyogo-ken 674-0064 TEL: 078-936-1705 FAX: 078-936-1672
	Inami Factory 720-1 Innaminakaba Inami-cho, Kako-gun, Hyogo-ken 675-1111 TEL: 079-496-2605 FAX: 079-496-2606 Land: 5,125 m ² Floor: 2,760 m ²
	Kobe Design Office KCC Building 6F 3-1-1 Kaigandori Chuo-ku, Kobe-shi, Hyogo-ken 650-0024 TEL: 078-392-2340 FAX: 078-392-2341
Establishment	Jan 1988
Representative	HIRAI Kosuke
Capital	99,000,000 yen
Product	Design and manufacturing of various machinery and factory equipment Design and manufacturing of various hydraulic tubes assembly in power plant, sea water tubes Design and manufacturing of various types of water piping tubing and aqueduct Design and manufacturing of plant tubes
Major Customer	Mitsubishi Heavy Industries Ltd. Mitsubishi Heavy Industries Machinery Systems, Ltd. Caterpillar Japan Ltd. MHI NS Engineering Co., Ltd. Kobe Steel, Ltd. Shinko Techno Engineering Co., Ltd. Toshiba Energy Systems & Solutions Corporation Toshiba Plant Systems & Services Corporation Mitsubishi Electric Engineering Company Limited Kawasaki Heavy Industries, Ltd. JIM Technology Corporation Sumitomo Heavy Industries Gearbox Co., Ltd. TOA GAIGYO Co., Ltd. Shinko Engineering & Maintenance Co., Ltd.



▲ Suitousha Co., Ltd.



▲ NEO DAISEI Co., Ltd.



▲ SEC Co., Ltd.

Wuxi Suitou Machinery Co., Ltd. (WSM) 

Location	Postal Code: 214142 No. 19, Huayou 3rd Road, Wuxi National Hi-Tech Industrial Development Zone, Jiangsu, China TEL: 0510-8530-8671 FAX: 0510-8530-8413 Land: 14,000 m ² Floor: 8,000 m ²
Establishment	Nov 2002
Representative	HIRAI Daisuke
Capital	3.44 million dollar (USD)
Product	Manufacture of hydraulic tubes assembly for construction machinery
Major Customer	Caterpillar Xuzhou Co., Ltd. (CXCL) Caterpillar Suzhou Co., Ltd. (CSCL) Caterpillar (China) Machinery Components Co., Ltd. (CCMC) Caterpillar Brasil Ltda. Caterpillar France (S.A.S) Volvo Construction Equipment (China) Co., Ltd. Liebherr Machinery (Dalian) Co., Ltd. John Deere (Tianjin) Co., Ltd. Lovel Construction Machinery

Suitou Hydraulic Tube (Changzhou) Co., Ltd. (STC) 

Location	Postal Code: 213100 No.33 Longhui Road Wujin Hi-Tech Industrial Development Zone, Changzhou, Jiangsu, China TEL: 0519-8622-0297 FAX: 0519-8622-0296 Land: 16,748m ² /Floor: 7,627m ²
Establishment	Nov 2010
Representative	HIRAI Daisuke
Capital	6 million dollar (USD)
Product	Manufacture of hydraulic tubes assembly for construction machinery
Major Customer	Kobelco Construction Machinery (China) Co., Ltd. (KCMC) Hangzhou Kobelco Construction Machinery Co., Ltd. (HKCM) JCB Construction Equipment (Shanghai) Co., Ltd. Kato (China) Construction Machinery Co., Ltd. Caterpillar (Qingzhou) Co., Ltd.

Wuxi Suitou Hydraulic Research & Design Co., Ltd. (SRD) 

Location	Postal Code: 214142 Building C, No.19, Huayou Road 3, New District, Wuxi, Jiangsu, China TEL: 0510-8525-0191 FAX: 0510-8525-0195
Establishment	Jan 2011
Representative	HIRAI Kosuke
Capital	420 thousand dollar (USD)
Product	Design of hydraulic tubes assembly

Onaga Suitou Precise Machinery (Changzhou) Co., Ltd. (OSC) 

Location	Postal Code: 213100 No.33, Longhui Road, Wujin Hi-tech Industrial Zone, Wujin, Changzhou, Jiangsu, China TEL: 0519-8622-0297 FAX: 0519-8622-0296
Establishment	Nov 2013
Representative	ONAGA Masaru
Capital	200 thousand dollar (USD)
Product	Manufacturing of various parts for hydraulic tubes assembly

Suitou Philippines, Inc. (SPI) 

Location	Lots 1-2 Block 9 Hermosa Ecozone Industrial Park, Brgy. Palihan, Hermosa, Bataan 2111 Land: 16,503 m ² Floor: 2,440 m ²
Establishment	Oct 2018
Representative	HIRAI Daisuke
Capital	190 million pesos (PHP)
Product	Manufacture of hydraulic tubes assembly for construction machinery

Jan 1938	Established Hirai Works in Kaguracho, Nagata-ku, Kobe, and became a Kobe Shipyard partner factory of Mitsubishi Heavy Industries, Ltd.
Apr 1951	Established Suitousha L.P. and HIRAI Susumu as representative.
Jun 1963	Established the first factory in Okubo-cho, Akashi in order to meet production expansion, and sold two factories in Sugaharadori, Nagata-ku and Mikawaguchi-cho, Hyogo.
Nov 1972	Expanded the first factory and establishment of an office on the same site, relocation of headquarters to 1635 Aza kaniike, Eigashima, Okubo-cho, Akashi
Mar 1973	Established YAGI Factory in Shirogatani, Yagi, Okubo-cho, Akashi
Mar 1980	Established KASAI Factory in Kasai, Hyogo
May 1982	Established the second factory in Aza Hanniyaden, Yagi, Okubo-cho, Akashi
Oct 1982	Suitou became Limited company as Suitousha Co., Ltd. from Suitou L. P.
Apr 1984	HIRAI Susumu became the Chairman of Suitousha Co., Ltd. HIRAI Yoshiharu became the President of Suitousha Co., Ltd.
Jan 1988	Separated the design department on the site of the first factory and became Suitou Engineering Co., Ltd.
Jan 1990	Established Futami factory on 14 Higashinijima, Harima-cho, Kako-gun, Hyogo and integrated the main division of the first plant and the Yagi Factory, and renamed the first factory to Akashi Factory
Sep 1995	Changed the name of Suitou Engineering Co., Ltd. to SEC Co., Ltd.
Dec 1996	Expanded the factory to the west of the main factory and integrated the second factory
Mar 1997	Increased capital of Suitousha Co., Ltd. to 20 million yen
Sep 2003	Wuxi Suitou Machinery Co., Ltd. (WSM) Started Operation In Wuxi, China
May 2005	Increased capital of WSM and completed factory expansion of WSM
May 2006	Increased capital of Suitousha Co., Ltd. to 80 million yen
Jun 2006	Increased capital of SEC Co., Ltd. to 20 million yen
Jul 2006	Established Inami Factory in Inami-cho, Kako-gun, Hyogo Increased capital of WSM
Oct 2007	Established Akashi Logistics Center in Akashi, Hyogo
Jul 2008	Established Kobe Factory at High-tech park in Nishi-ku, Kobe
Mar 2009	Completed the third expansion on WSM Factory
Apr 2009	Relocated Headquarter to Kobe Factory
Jun 2009	Increased capital of SEC Co., Ltd. to 50 million yen
Apr 2011	Expanded the Akashi Logistics Center
Oct 2011	Suitou Hydraulic Tube (Changzhou) Co., Ltd. started operation in Changzhou, China
Dec 2011	Wuxi Suitou Hydraulic Research & Design Co., Ltd. (SRD) started operation inside of WSM
Feb 2012	NEO DAISEI Co., Ltd. started operation
Dec 2012	Increased capital of Suitousha Co., Ltd. to 99.5million yen
Nov 2013	Established Onaga Suitou Precise Machinery Co., Ltd. (OSC) as a joint venture with Onaga Co., Ltd.
Dec 2013	Established India office
Jan 2014	Completed Kobe 2nd Factory and started operation
Sep 2018	Increased the capital of SEC Co., Ltd. to 99 million yen
Jan 2019	Transfer non mass production business to SEC Co., Ltd HIRAI Yoshiharu became the Chairman of Suitousha Co., Ltd. HIRAI Daisuke became the President of Suitousha Co., Ltd.
May 2020	Suitou Philippines, Inc. (SPI) Started Operation In the Philippines
Dec 2020	SEC Co., LTD. Made Sanyo Engineering Co., Ltd. as 100% Subsidiary Company
Aug 2021	SEC Co., LTD. Established Kobe Design Office in Kobe, Hyogo

The working filed of SUITOU Group getting expanding to the world

The main customers of the SUITOU Group are major construction manufacturers and major heavy industry manufacturers which having business over the world. In order to meet the expectation, SUITOU expand the business in overseas. Two fully operating factories in CHINA (WUXI and CHANGZHOU) and Philippines factory going to start operation in 2020. CHINA factories are expanding their business with local manufacturers and Philippines factory will increase the production with overseas manufacturers and serve as an exporting base to the world including EUROPE and the United States.

The Working filed of SUITOU Group getting expanding to the world.

Major Customers (Overseas)

-  Caterpillar Inc. (U.S)
-  Caterpillar Brasil Ltda. (BRAZIL)
-  Caterpillar Belgium S.A. (BELGIUM)
-  Caterpillar Thailand Limited (THAILAND)
-  Caterpillar India Pvt. Ltd. (INDIA)
-  Caterpillar Indonesia, PT (INDONESIA)
-  Volvo Construction Equipment Germany GmbH (GERMANY)
-  JCB Heavy Products Ltd. (U.K)



CHINA

Wuxi Suitou Machinery Co., Ltd. (WSM)

- Caterpillar Xuzhou Co., Ltd. (CXL)
- Caterpillar Suzhou Co., Ltd. (CSCL)
- Caterpillar (China) Machinery Components Co., Ltd. (CCMC)
- Caterpillar Brasil Ltda.
- Caterpillar France(S.A.S)
- Volvo Construction Equipment(China) Co., Ltd.
- Liebherr Machinery (Dalian) Co., Ltd.
- John Deere (Tianjin) Co., Ltd.
- Lovol Construction Machinery

Suitou Hydraulic Tube (Changzhou) Co., Ltd. (STC)

- Kobelco Construction Machinery (China) Co., Ltd. (KCMC)
- Hangzhou Kobelco Construction Machinery Co., Ltd. (HKCM)
- JCB Construction Equipment (Shanghai) Co., Ltd.
- Kato Works Co., Ltd.
- Caterpillar (Qingzhou) Co., Ltd.

JAPAN

Suitousha Co.,Ltd. / SEC Co., Ltd.

- Caterpillar Japan Ltd.
- Komatsu Ltd.
- KOBELCO Construction Machinery Co., Ltd.
- KUBOTA Corporation
- TAKEUCHI Mfg. Co., Ltd.
- MORITA CORPORATION
- GIKEN Ltd.
- Mitsubishi Heavy Industries, Ltd.
- Mitsubishi Heavy Industries Machinery Systems, Ltd.
- Kobe Steel, Ltd.
- Kawasaki Heavy Industries, Ltd.
- Toshiba Energy Systems & Solutions Corporation
- Toshiba Plant Systems & Services Corporation